



podis®

FLAT + FLEXIBLE

The system solution for decentralized energy distribution.

HELLO WIELAND ELECTRIC

Tradition and innovation - Wieland is representing the synergy of these two guiding principles for more than 100 years.

At Wieland Electric, we are proud to be the world market leader in electrical connections, and have been focusing on safe and innovative technologies since our founding. The beginnings of our success lie in the legendary Wieland Clamp, the first-ever safe electrical connector. Since then, innovation has pushed us to develop safer and more efficient ways to electrify the world.

Expanding from a component-only manufacturer, we are now one of the leading suppliers of innovative, future-oriented, and complete electrical solutions.

The focus here is on the “Installation Systems” and “Safety Automation” sectors. The Installation Systems sector focuses on decentralized energy distribution in modular construction, building automation, EV charging and lighting solutions. In the Safety Automation sector, the focus is on systems and services for the functional safety of machines in the mechanical engineering and wind power sectors.

We are at our customers’ side in every step of the project, right from the start. Our experts offer consulting, on-site services, and technical support. We see ourselves as service providers, trainers and subject-matter experts.



1910

Founded in
Bamberg



1700+

Employees
worldwide



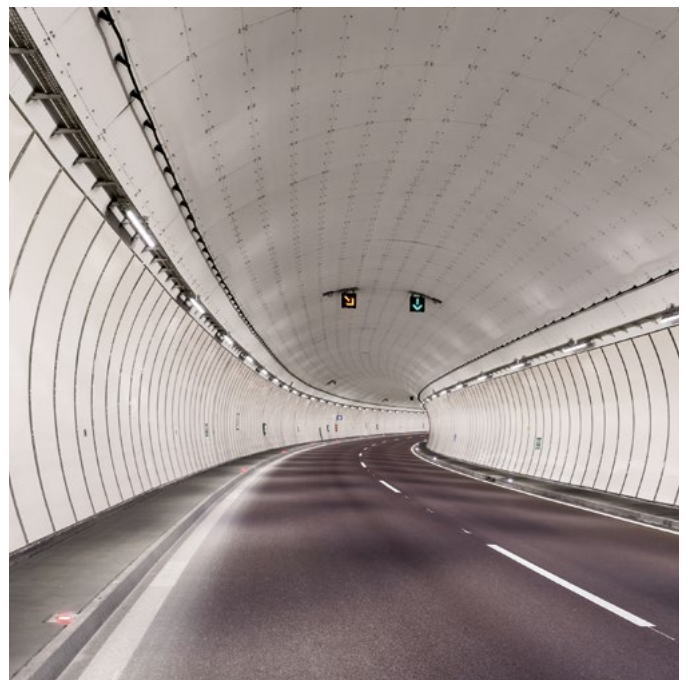
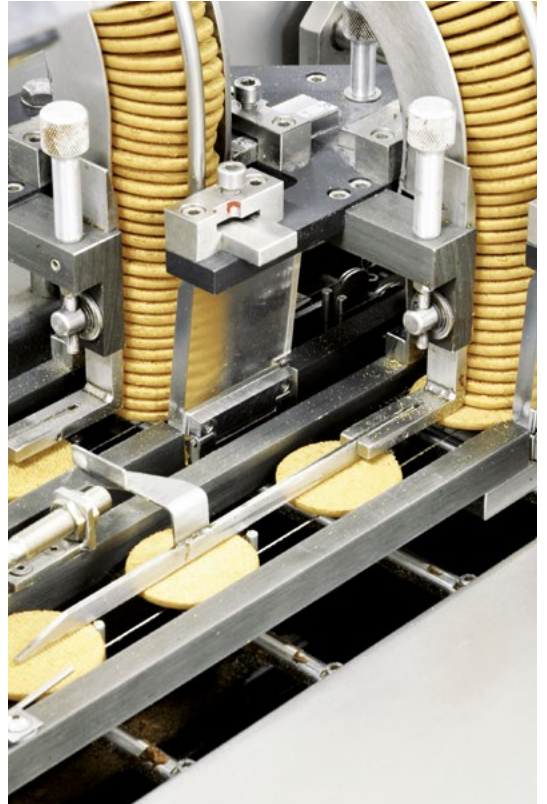
70+

Countries
worldwide

CONTENT

05	podis® - The solution with a flat cable system
06	podis® for every Application
08	Solutions for electromobility
10	Solutions for Airport logistics
12	Solutions for Automotive
14	Solutions for mechanical and plant engineering
16	Solutions for Intra logistics
18	Solutions for Cranes, shafts, tunnels
20	Decentralized vs. central installation
22	Cost savings - connection principle
23	Quick installation in cable duct
24	podis® CON 5G16 - Flat cable system up to 41 A
38	podis® CON 5G6 - Flat cable system up to 100 A
50	podis® CON 7G4 - Flat cable system up to 32 A
62	Approvals
63	Information and contacts





PODIS® – THE SOLUTION WITH THE FLAT CABLE SYSTEM.

podis® is the innovative solution for decentralized energy distribution. The basic system includes a flat cable, a connection module – which serves as both a feed-in and a tap-off point – a cable end piece, and fixing clamps. This allows an electrical infrastructure to be created with just four components. Additional components allow the system to integrate double taps, fault and overcurrent protection, maintenance switches, and more. Configurable components and extensive accessories complete the system.

Thanks to the **plug-and-play concept**, traditional installation effort is **reduced by up to 70 %**. Furthermore, it impresses with its robustness (IP65 protection) and flexibility in installation, expansion, or conversion.

With these features, it is the ideal solution for use in harsh environments such as industry, underground garages and parking garages.

SYSTEM SOLUTIONS FOR:

- + ELECTRIC MOBILITY
- + AIRPORT LOGISTICS
- + AUTOMOTIVE
- + INTRALOGISTICS
- + MACHINE BUILDING AND PLANT MANUFACTURING
- + CRANES, SHAFTS, TUNNELS



ECONOMICAL PLANNING CAPABILITY

podis® flat cable solutions reduce installation times, lower project costs and increase flexibility for system expansions or later replanning.



MODULAR INSTALLATION SYSTEM

podis® offers a wide range of system components that enable space-saving, extremely clear cable management.



QUICKER ASSEMBLY

The piercing contacts allow connection modules to be quickly and easily connected to the flat cable, without the need for stripping or dismantling.

PODIS® FOR EVERY APPLICATION

podis®CON is a pluggable, modular power bus system for remote power supply. Because of the simple, non-interrupted maintenance and service possibilities, podis®CON guarantees the highest system availability. The plug-in components can be replaced quickly during maintenance and therefore also contribute to high system availability. With it, many functions such as power distribution, illumination, or active components can be directly mounted to the power bus without requiring additional fastenings. With the podis®CON plug, as many additional devices as needed can be connected and flexibly positioned.



ELECTROMOBILITY

- Car parks
- Underground car parks



AIRPORT LOGISTICS

- Baggage conveyor technology
- Cargo conveyor technology



AUTOMOTIVE

- Skid conveyor technology
- "Power & Free" systems
- Floor conveyor technology
- Pulling chain conveyors
- Pallet conveyor technology



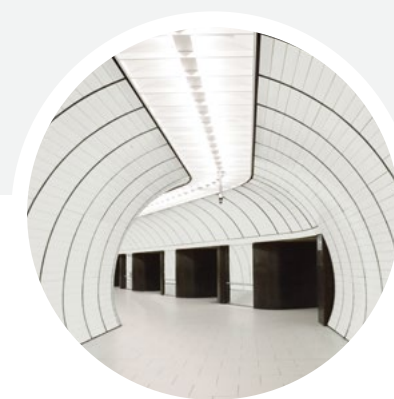
MECHANICAL ENGINEERING

- Packaging machines
- Robots
- Assembly and production lines
- Food production



INTRA LOGISTICS

- Roller conveyors
- Belt conveyors
- Chain conveyors
- Pallet transportation
- Package conveyors



CRANES, SHAFTS, TUNNELS

- Gantry cranes
- Special cranes
- Ascents/descents
- Service tunnel
- Work areas



SOLUTIONS FOR **ELECTROMOBILITY**

- + Fast first installation and retrofit
- + Completely pluggable possible
- + High load and decentralized protection





APPLICATION AREAS

- Car parks
- Underground car parks



SOLUTIONS

- Power distribution
- Decentralized protection



BENEFITS

- Charging stations up to 22 kW
- Up to 20 charging stations on one line
- Fast expansion in case of delayed demand for charging stations
- Space-saving thanks to decentralized installation





SOLUTIONS FOR **AIRPORT LOGISTICS**

- + Energy distribution without control cabinet
- + Flexible and modular
- + Time and cost savings

**APPLICATION AREAS**

- Baggage conveyors
- Cargo conveyors

**SOLUTIONS**

- Power distribution
- Decentralized motor starter
- Sensor connection

**BENEFITS**

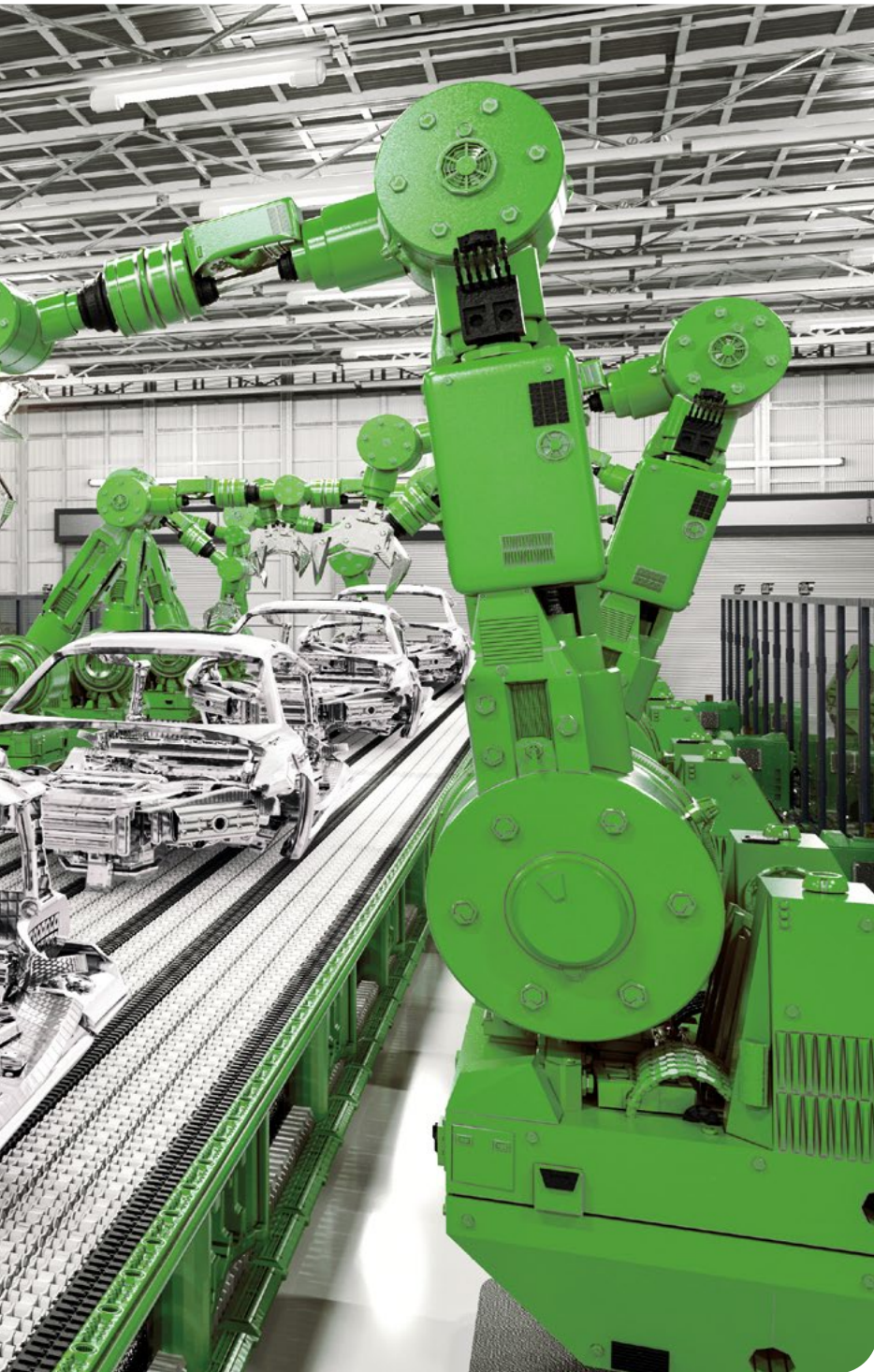
- Easy project planning
- Fast, faultless installation
- Extends flexibility
- Degree of protection IP65



SOLUTIONS FOR **AUTOMOTIVE**



- + Short installation times
- + Optimum maintenance and repair
- + High plant availability

**APPLICATION AREAS**

- Skid conveyors
- Floor conveyors
- Roller conveyors
- Carrying chain conveyors
- “Power and Free” systems

**SOLUTIONS**

- Power distribution
- Field devices for SEW MOVIMOT
- I/O modules for sensor connection

**BENEFITS**

- Cost-optimized system
- Fast, faultless installation
- Rebuild flexibility in the modular system
- High machine availability



SOLUTIONS FOR **MACHINE CONSTRUCTION** AND **SYSTEM ENGINEERING**

- + Quick commissioning
- + Flexible retrofitting
- + Optimum maintenance and repair

**APPLICATION AREAS**

- Packaging machines
- Robots
- Assembly and production lines
- Food production

**SOLUTIONS**

- Power distribution
- Remote motor starter
- Fieldbus control
- Illumination module
- Maintenance sockets

**BENEFITS**

- Reduced complexity
- 400 V and 24 V on one strand
- Flexible, modular system
- High machine and system engineering availability
- Fast, simple, faultless installation
- High protection class IP65



SOLUTIONS FOR **INTRA LOGISTICS**

- + Easy to engineer
- + Maintenance-friendly plug-in technology
- + Easy expansion

**APPLICATION AREAS**

- Roller conveyors
- Pallet conveyors
- Carrying chain conveyors
- Belt conveyors
- Container transportation
- Package conveyance

**SOLUTIONS**

- Power distribution
- Sensor connection
- Direct/Reversible/Soft starter
- Fieldbus control for SEW MOVIMOT
- 24 V power distribution

**BENEFITS**

- Fast, easy, faultless commissioning
- Compact motor starter
- Easy to modify or extend
- Durable system with high protection class



SOLUTIONS FOR **CRANES, SHAFTS, TUNNELS**

- + Simple adjustment of the installation
- + On-site diagnosis
- + Maintenance-friendly plug-in technology

**APPLICATION AREAS**

- Gantry cranes
- Special cranes
- Ascents/descents
- Service tunnels
- Work areas

**SOLUTIONS**

- Power distribution
- Lighting modules
- Maintenance sockets

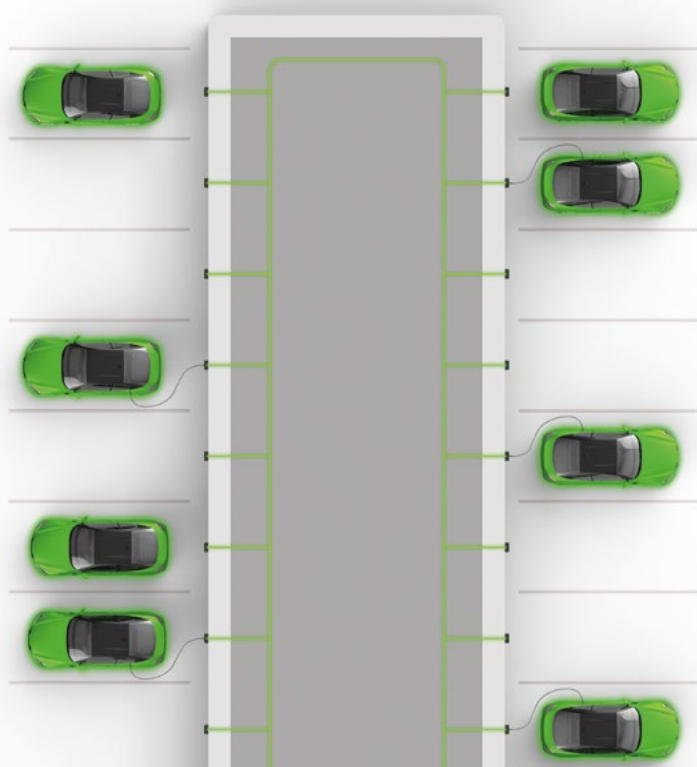
**BENEFITS**

- Fast installation of large line sections
- Installation easily expandable
- High operational reliability
- High protection class IP65





DECENTRALIZED INSTALLATION



Decentralized installation with podis® allows you to implement energy distribution for an entire parking deck with just one supply line and place the modules for energy exactly where you need them. This saves space and ensures a modern and clear aesthetic.



- + Low space requirement
- + High flexibility during installation, for conversion and expansion
- + High material and Cost savings

HOW FAST CAN YOU SAY “SAVE”?

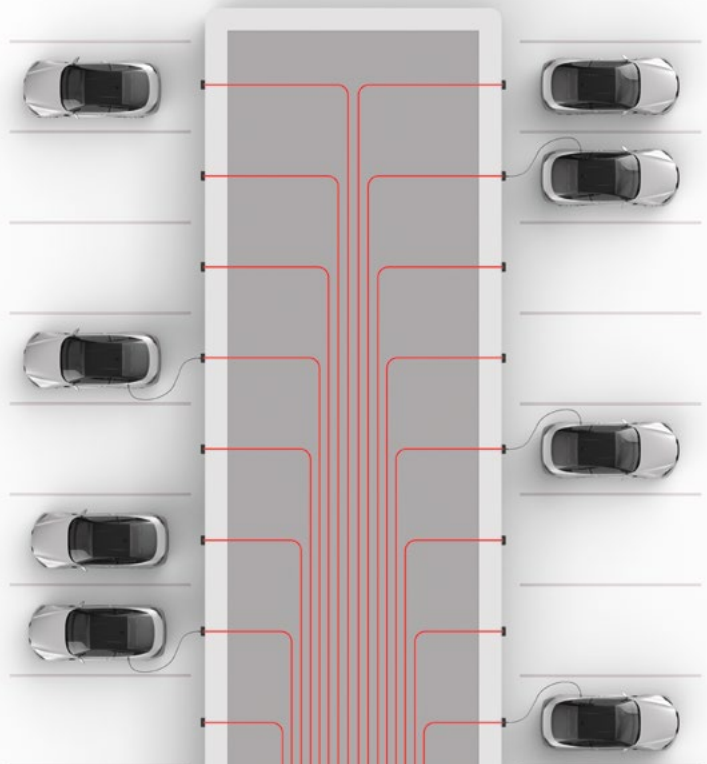
S.

CENTRAL INSTALLATION

A central installation means significantly higher material costs compared to a decentralized installation. The large number of supply lines also means that considerable space is required in the distribution cabinet. Retrofitting thus becomes a Herculean task.



- + Immense space requirement for Cable routing and fuse protection
- + Time-consuming installation
- + Cost-intensive due to high Cost of materials



66%

**TIME SAVED AT THE
FIRST INSTALLATION**



88%

**TIME SAVED FOR
EXTENSIONS**



66%

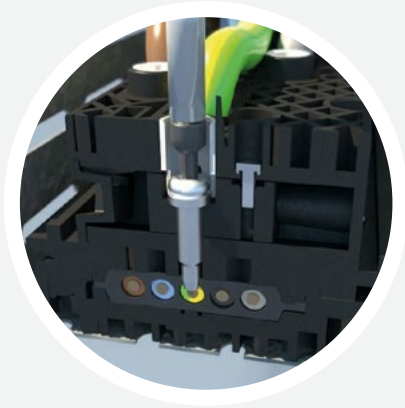
**SAVED ON
MATERIALS**



30%

**INSTALLATION
COSTS SAVED**

COST REDUCTION

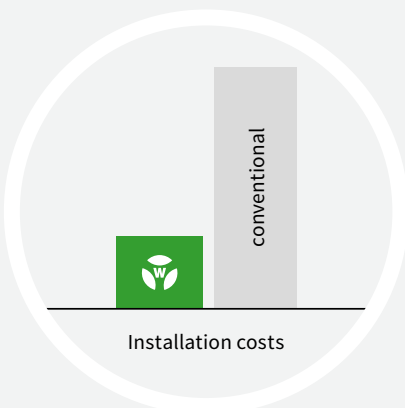


NO CABLE CUTTING NECESSARY

There is no need for any laborious cutting, baring, stripping, or clamping of the cables.

INSTALLATION AT ANY POINT AND AT ANY TIME

Flexible installation allows the connection modules to be terminated in any position. The modules can also be moved anywhere and at any time. Not just during installation and commissioning but also during the lifetime of the installation. Useful if the system needs modifying or expanding.



REDUCE COSTS WITH DECENTRALIZED INSTALLATION

When compared to a traditional centralized installation, decentralized solutions offer savings in wiring, cable trays, fixtures and remove the need for rigid steel conduit. It also reduces the number and size of distribution panels.

PODIS® – QUICK INSTALLATION IN CABLE DUCT.

podis® power bus solutions are optimally suited for laying and installing directly in cable ducts or in cable layouts. Because of the compact and narrow design (60 mm) and cables aligned longitudinally, the installation in the cable duct requires very little space.



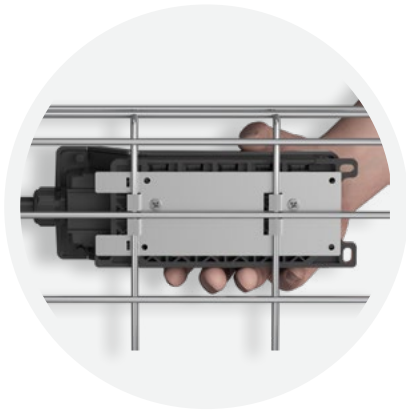
Open the housing



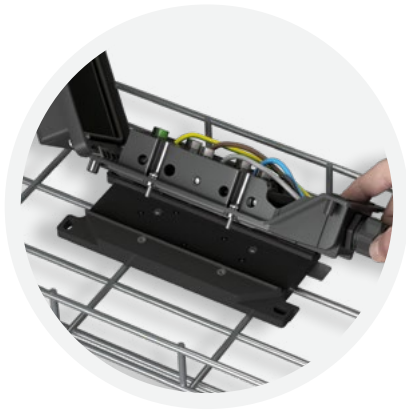
Insert the round cable



Fastening the wires



Mounting the module.
Here by using a mounting plate.



Open the housing base



Insert the tray cable and close
the housing base



Copper displacement connection
of the cable



Closing of the housing. Finished!

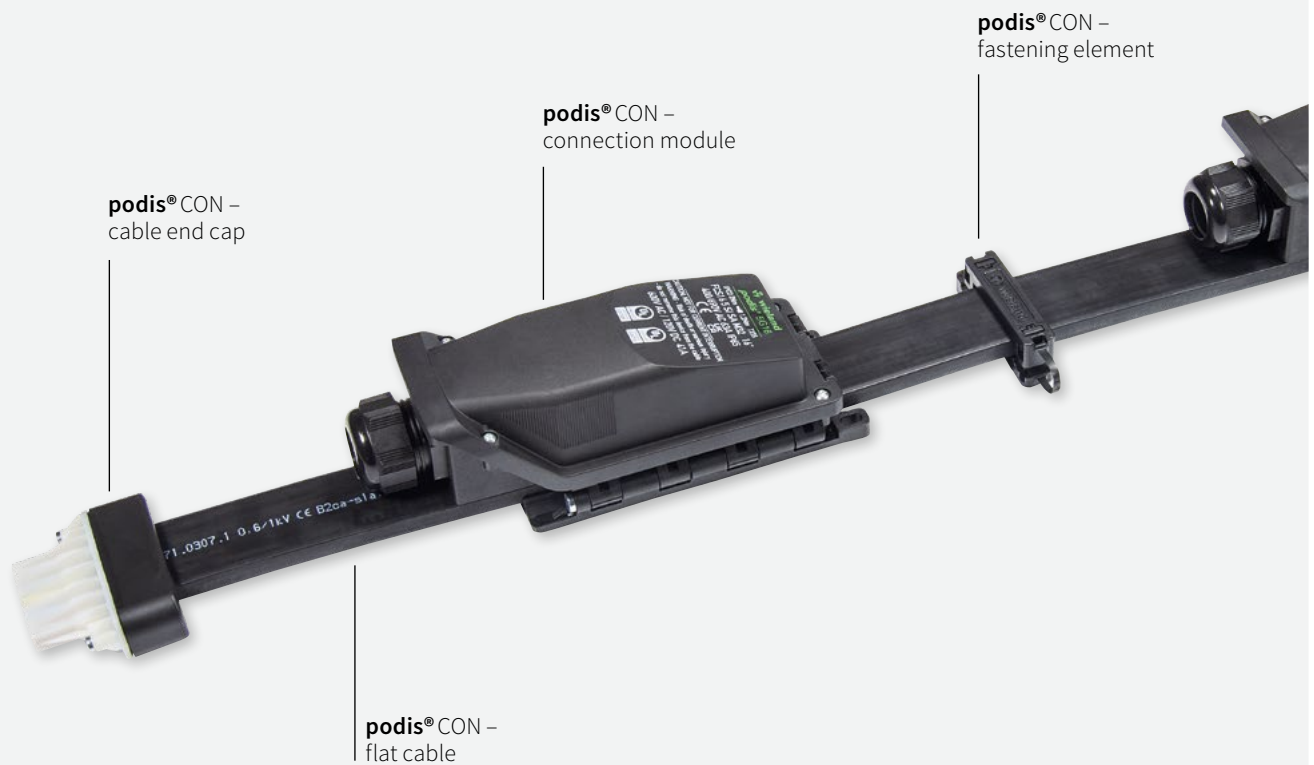


Faster installation with pre-wired,
pluggable RST® connector

PODIS® CON 5G16

Flat cable system

The podis® CON 5G16 flat cable system is an innovative solution for decentralized power distribution. The basic system consists of just four components. This allows for the creation of a flexible and expandable electrical infrastructure for grid applications with minimal logistical effort.



FEATURES

- + 5-core flat cable system
- + For network applications
- + 63 A / 690 V
- + UL 41 A / 600 V

PODIS® CON 5G16 – THE 4 COMPONENTS

Basic Portfolio



FLAT CABLE

The flat cable – or flexible busbar – is the system's key feature. With a bending radius of just ~58 mm, installation is easy, even with obstacles. It features 5 x 16 mm² conductors.

CONNECTION MODULE

The connection module with cable gland allows both the input to the flat cable and the output to the consumer. It can be positioned and relocated as required. The piercing contacts create the connection between the flat cable and the outgoing round cable. The cable gland and lock nut are ordered separately.



CABLE END CAP + FASTENING ELEMENTS

The cable end cap is mounted at the ends of the flat cable. This serves to maintain IP protection and to comply with clearance and creepage distances.

The fastening elements for the flat cable are usually placed at a distance of approximately 80 cm. They create a gap from the substrate and can be attached with screws or a setting tool.

PODIS® CON 5G16 – COMPONENTS

Components for further time savings + functions



PLUGGABLE CONNECTION MODULE

The pluggable connection module is equipped with an RST® device connector and is pre-wired internally. The mating component – the pre-assembled RST® cable – is then simply plugged in on site. This eliminates the need for wiring and minimizes the source of errors.

CIRCUITBREAKER MODULE

The circuitbreaker module serves both as a connection to the flat cable and for the integration of decentralized overcurrent and/or residual current protection devices for the final circuit, as well as for the integration of maintenance or motor protection switches. The circuitbreaker modules are available in both plug-in RST® versions and with cable glands.



CONNECTION MODULE WITH EXTENDED FUNCTIONS

The connection module with a raised cover offers the possibility of more wiring space, the integration of REGs in 3 HP, or the integration of a second outgoing device. This module is also available in plug-in or cable gland versions.



PRE-ASSEMBLED CABLES RST®

The connection between the pluggable modules and the end user is realized with the pre-assembled cable. They are prepared for a conventional connection on the outgoing side and pre-assembled with the necessary socket on the incoming side, which is connected to the connection module or circuitbreaker module.

FEED-IN MODULE

The feed-in module can be used as an alternative to the connection module for feeding into the flat cable if a cross-section larger than 16 mm² is required. The feed-in module is attached to the end of the flat cable instead of a cable end piece.



TECHNICAL DATA

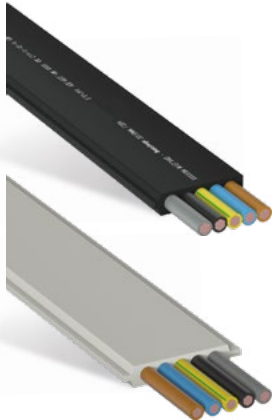
- Rated voltage: 690 V
- Rated current: 63 A
- Rated cross-section: 16 mm²
- IP protection: 65

TECHNICAL DATA

- Rated voltage: 600 V
- Rated current
 - Feed-in module: 65 A
 - Connection module: 41 A
- Design cross-section: AWG 6
- NEMA Type Rating: 1

PODIS® CON 5G16 FLAT CABLES

Flat cable



Designation	Type	Art. No.	Color	PU
Flat cable	FL-LSHF 5G16	00.771.0307.1	Black	500 m
Flat cable	FL-LSHF 5G16	00.771.0307.3	grey-white	500 m

TECHNICAL DATA

Nominal voltage U	600/1,000 V
Material outer sheath	Polyolefin
Core identification	colored
Core insulation	Polyolefin
Bending radius, static	57.5 mm
Fire behavior according to EN 50575:2014	B2ca-s1a-d1-a1
Halogen free	according to EN 50267-2-1
UV resistance	according to EN 50618

Flat cable



Designation	Type	Art. No.	PU
Flat cable	XPE 5G16	00.729.0307.1	400 m

TECHNICAL DATA

Nominal voltage U	600/1,000 V
Color outer sheath	Black
Material outer sheath	Copolymer (XPE)
Core identification	colored
Core insulation	XHH
Bending radius, static	60 mm
Flame retardant	Acc. EN 50265-2-1
Halogen free	according to EN 50267-2-1

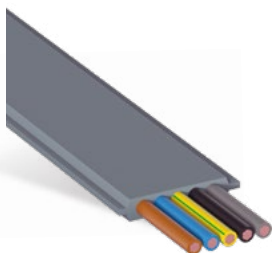
UL (TC-ER)

Nominal voltage: 600 V AC
Conductor cross-section: AWG 6

cUL (AWM)

Nominal voltage: 600 V AC
Conductor cross-section: AWG 6

Flat cable 5G25



Designation	Type	Art. No.	PU
Flat cable	LSHF 5G25	99.099.0000.8	500 m

TECHNICAL DATA

Nominal voltage U	600/1,000 V
Color outer sheath	Dark grey
Material outer sheath	Polyolefin
Core identification	colored
Core insulation	Polyolefin
Bending radius, static	57.5 mm
Flame retardant	according to IEC 60332-1-2 & IEC 60332-3-24 (Cat C)
Halogen free	according to EN 60754-1 / IEC 60754-1



The 5G25 mm² flat cable is used with the same podis CON 5G16 components. The larger cross-section reduces the voltage drop. Higher current options are available upon request.

PODIS® CON 5G16 CONNECTION MODULES

Connection module for cable gland



Designation	Type	Art. No.	Art. No.	PU
Connection module	FCS 16 5 SI SA M32	75.456.0053.1		2
Connection module	FCS 16 5 SI SA M25		75.456.0153.1	2

TECHNICAL DATA

Rated voltage	690 V
Rated current	63 A
Connection type	Screw connection
Connection cross section stranded	1.5 - 16 mm ²
Output	M32 M25
Color	Black
Degree of protection	IP65
Length x Width x Height	218 x 84 x 80 mm

cULus

Rated voltage: 600 V AC
Rated current: 41 A
Connection cross section: AWG 6 str.



Cable glands not included in delivery, these can be ordered separately, see page 35.

Pluggable connection module with RST®



Designation	Type	Art. No.	Art. No.	PU
Connection module	FCS 16 5 SI SA RST	75.452.0053.1		2
Connection module	FCS 16 5 SI SA RST 25		75.453.0053.1	2

TECHNICAL DATA

Rated voltage	400V
Rated current	20 A 25 / 32* A
Connection type	Pluggable
Internal wiring	2.5 mm ² 6 mm ²
Output	RST20i5 black RST25i5 concrete grey
Color	Black
Degree of protection	IP65
Length x Width x Height	218 x 84 x 80 mm

cULus

Rated voltage: 600 V AC
Rated current: 20 A
Internal wiring: AWG 14



*When operating at 32 A, the derating curve must be observed; this can be found in the eShop.

Connection module for cable gland



Designation	Type	Art. No.	PU
Connection module	FCS 16 5 SI SA M32 LG	75.456.0053.3	2

TECHNICAL DATA

Rated voltage	690 V
Rated current	63 A
Connection type	Screw connection
Connection cross section stranded	1.5 - 16 mm ²
Output	M32
Color	Light grey
Degree of protection	IP65
Length x Width x Height	218 x 84 x 80 mm



Cable glands not included in delivery, these can be ordered separately, see page 35.

PODIS® CON 5G16

CIRCUITBREAKER MODULES RCBO



RCBO Type A C32 A / 30 mA

Pluggable with RST25i5

Integrated

- 4-pole RCBO type A C32 A / 30 mA
- Protective conductor terminal 6 mm²

Order No. 75.456.1255.1 | PU 1



RCBO Type A C20 A / 30 mA

Pluggable with RST20i5

Integrated

- 4-pole FI/LS type A 20 A / 30 mA
- Protective conductor terminal 6 mm²

Order No. 75.452.1353.1 | PU 1



RCBO Type A C16 A / 30 mA

Pluggable with RST20i5

Integrated

- 4-pole RCBO type A C16 A / 30 mA
- Protective conductor terminal 6 mm²

Order No. 75.456.1155.1 | PU 1



RCBO Type A C32 A / 30 mA

For cable gland M32

Integrated

- 4-pole RCBO type A C32 A / 30 mA
- Protective conductor terminal 6 mm²

Order No. 75.456.0955.1 | PU 1



Cable glands not included in delivery, these can be ordered separately, see page 35.



RCBO Type A C16 A / 30 mA

For cable gland M32

Integrated

- 4-pole RCBO type A C32 A / 30 mA
- Protective conductor terminal 6 mm²

Order No. 75.456.0855.1 | PU 1



Cable glands not included in delivery, these can be ordered separately, see page 35.

PODIS® CON 5G16

CIRCUITBREAKER MODULES MCB



MCB C32 A

Pluggable with RST25i5

Integrated

- 4-pole LS C32 A
- Protective conductor terminal 6 mm²

Order No. 75.453.1755.1 | PU 1



MCB C32 A

For cable gland M32

Integrated

- 4-pole LS C32 A
- Protective conductor terminal 6 mm²

Order No. 75.456.1755.1 | PU 1



Cable glands not included in delivery, these can be ordered separately, see page 35.



MCB C32 A

For cable gland M25

Integrated

- 3-pole LS C32 A
- N terminal & protective conductor terminal 6 mm²

Order No. 75.456.0255.1 | PU 1



Cable glands not included in delivery, these can be ordered separately, see page 35.

PODIS® CON 5G16 **FURTHER MODULES**



Maintenance switch module – 40 A / 400 V; AC-23A (Pe) 11 kW & auxiliary switch

For cable gland M25 & M12-A Signal

Integrated

- 3-pole maintenance switch 40 A
- Auxiliary contact 16 A
- Handle
- M12-A signal connector
- N terminal & SL terminal 6 mm²

Order No. 75.456.0155.1 | PU 1



Cable glands not included in delivery, these can be ordered separately, see page 35.



Motor protection switch module – MSS 16 A & auxiliary switch

For cable gland M25 & M12-A Signal

Integrated

- 3-pole MSS 16 A
- Auxiliary switch
- M12-A signal connector

Order No. 75.452.1155.1 | PU 1



Cable glands not included in delivery, these can be ordered separately, see page 35.



Empty variant – for integration of rail-mounted devices (4 modular spacing)

For cable gland M32

Integrated

- Screwed DIN rail EN60715

Order No. 75.456.1055.1 | PU 1



Cable glands not included in delivery, these can be ordered separately, see page 35.



The power loss diagram must be considered when selecting the REGs used. This can be viewed in the eShop under Downloads > Installation Instructions.

PODIS® CON 5G16

CONNECTION MODULE WITH EXTENDED FUNCTIONS

Double output pluggable with 2x RST25i5



Designation	Type	Art. No.	PU
Double output	FCS 16 5 SI SA RST25	75.453.0353.1	1

TECHNICAL DATA

Rated voltage	400V
Rated current	63 A (sum of both outputs; load of one output up to 32 A (max. 28 °C)*)
Connection type	Pluggable
Internal wiring	6 mm ²
Output	RST25i5 concrete grey
Color	Black
Degree of protection	IP65
Length x Width x Height	218 x 84 x 146 mm



*When operating at 32 A, the derating curve must be observed; this can be found in the eShop.

Double output for 2x cable gland M32



Designation	Type	Art. No.	PU
Double output	FCS 16 5 SI SA 2xM32	75.456.0353.1	1

TECHNICAL DATA

Rated voltage	690 V
Rated current	63 A
Connection type	Screw connection
Connection cross section stranded	
One cable per terminal	1.5 - 16 mm ²
Two cables per terminal	1.5 - 6 mm ² *
Output	2 x M32
Color	Black
Degree of protection	IP65
Length x Width x Height	218 x 84 x 146 mm



Cable glands not included in delivery, these can be ordered separately, see page 35.



*Requires the use of a twin ferrule. See accessories on page 35

Connection module high version for 1x cable gland



Designation	Type	Art. No.	Art. No.	PU
Connection module	M32	75.456.0753.1		1
Connection module	M25		75.456.0653.1	1

TECHNICAL DATA

Rated voltage	690 V
Rated current	63 A
Connection type	Screw connection
Connection cross section stranded	1.5 - 16 mm ²
Output	M32 M25
Color	Black
Degree of protection	IP65
Length x Width x Height	218 x 84 x 146 mm



Cable glands not included in delivery, these can be ordered separately, see page 35.

Integration of rail-mounted devices (3 modular spacing) for cable gland



Designation	Type	Art. No.	Art. No.	PU
Connection module	M32	75.456.0553.1		1
Connection module	M25		75.456.0453.1	1

TECHNICAL DATA

Rated voltage	690 V
Rated current	63 A
Connection type	Screw connection
Connection cross section stranded	1.5 - 16 mm ²
Output	M32 M25
Color	Black
Degree of protection	IP65
Length x Width x Height	218 x 84 x 146 mm



Cable glands not included in delivery, these can be ordered separately, see page 35.



The power loss diagram must be considered when selecting the REGs used. This can be viewed in the eShop under Downloads > Installation Instructions.

PODIS® CON 5G16 FEED MODULES

Feed-in module M25



Designation	Type	Art. No.	PU
Feed-in module	FCS 16 5 SA SAM	75.450.2114.3	1

TECHNICAL DATA

Rated voltage	690 V
Rated current	100 A
Connection type	Screw terminal
Connection cross section stranded	10 - 35 mm ²
Color	Light grey
Degree of protection	IP65
Length x Width x Height	300 x 170 x 120 mm

cULus

Rated voltage:	600 V AC
Rated current:	65 A
Connection cross section:	AWG 6 - AWG 2



Cable glands not included in delivery, these can be ordered separately, see page 35.

Feed-in module M50



Designation	Type	Art. No.	Art. No.	PU
Feed-in module	FCS 16 5 SA SA M50 G	75.450.0014.3		1
Feed-in module	FCS 16 5 SA SA M50 K		75.450.0214.3	1

TECHNICAL DATA

Rated voltage	690 V	
Rated current	100 A	
Connection type	Screw terminal	
Connection cross section stranded	10 - 35 mm²	
Cable diameter	30 - 38 mm	25 - 31 mm
Color	Light grey	
Degree of protection	IP65	
Length x Width x Height	300 x 145 x 100 mm	

cULus

Rated voltage:	600 V AC
Rated current:	65 A
Connection cross section:	AWG 6 - AWG 2

Feed module M63



Designation	Type	Art. No.	Art. No.	PU
Feed-in module	FCS 16 5 SA SA M63 G	75.450.0114.3		1
Feed-in module	FCS 16 5 SA SA M63 K		75.450.0314.3	1

TECHNICAL DATA

Rated voltage	690 V	
Rated current	100 A	
Connection type	Screw connection	
Connection cross section stranded	10 - 70 mm ²	
Cable diameter	34 - 44 mm	29 - 35 mm
Color	Light grey	
Degree of protection	IP65	
Length x Width x Height	300 x 170 x 120 mm	

cULus

Rated voltage:	600 V AC
Rated current:	65 A
Connection cross section:	AWG 6 - AWG 2

PODIS® CON 5G16

ACCESSORIES



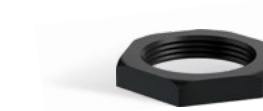
Designation	Type	Art. No.	PU
Cable gland	M32x1.5 for Ø 10-21 mm, black, UL approval	Z5.507.1753.1	10
Cable gland	M32x1.5 for Ø 18-25 mm, black, UL approval	Z5.507.1653.1	10
Cable gland	M32x1.5 for Ø 10-21 mm, light grey	Z5.507.1753.0	20
Cable gland	M32x1.5 for Ø 18-25 mm, light grey	Z5.503.0853.0	10
Cable gland	M25x1.5 for Ø 9-13 mm, black, UL approval	Z5.503.0653.1	10
Cable gland	M25x1.5 for Ø 13-18 mm, black, UL approval	Z5.503.0753.1	10
Cable gland	M25x1.5 for Ø 18-25 mm, black, UL approval	Z5.503.0853.1	10
Cable gland	M25x1.5 for Ø 9-16 mm, black, UL approval	Z5.507.1453.1	10
Cable gland	M25x1.5 for Ø 13-18 mm, black, UL approval	Z5.507.1553.1	10
Multihole seal	3x8 mm for M25, Z5.507.1553.1	05.512.4883.0	50
Multihole seal	4x7 mm for M25, Z5.507.1553.1	05.512.5083.0	50
Multihole seal	2x8 mm for M32, Z5.507.1653.1	05.512.4383.0	50

Locking screw



Designation	Type	Art. No.	PU
Locking screw	M25x1.5, black	05.506.7353.1	25
Locking screw	M32x1.5, black	05.506.7453.1	25

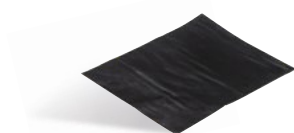
Locknut



Designation	Type	Art. No.	PU
Locknut	M25x1.5, black	05.505.0253.1	10
Locknut	M32x1.5, black	05.505.0353.1	10
Locknut	M32x1.5, light grey	05.505.0353.0	10

For cable glands and locking screws

Cable patch



Designation	Type	Art. No.	PU
Cable patch	140 x 152 mm	Z6.563.7800.0	2

For sealing the contact points.

Cable end cap



Designation	Art. No.	PU
Black	Z6.564.7053.1	10
Light gray	Z6.564.7053.3	10

Twin ferrule



Designation	Type	Art. No.	PU
Twin ferrule	2x6 mm ²	06.600.7227.6	50

For double output module 75.456.0353.1.

Flat cable feedthrough



Designation	Art. No.	PU
Housing feedthrough for flat cable	Z7.432.8053.0	1

Piercing screws



Designation	Art. No.	PU
Piercing screws for connection module	05.055.0200.8	10

PODIS® CON 5G16

ACCESSORIES

Cable clamp screw



Designation	Art. No.	PU
Cable clamp screw, with quick lock, black	05.569.7453.0	100
Cable clamp screw, with quick lock, light grey	05.569.7453.3	100

With distance to the ground, with clips for optional cable tray fastening.



Cable clip nail



Designation	Art. No.	PU
Cable clip nail, with quick lock	05.569.7553.0	100

With distance to the substrate, for fastening with nail setting device.



Clip basket



Designation	Art. No.	PU
Clip basket	05.569.7753.0	20

In combination with 05.569.7453.0 / 05.569.7453.3 / 05.569.7553.0.



Pipe clamp D20 - D50

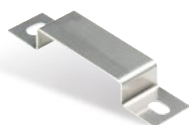


Designation	Art. No.	PU
Pipe clamp D20	F0.000.0055.7	20
Pipe clamp D25	F0.000.0056.3	50
Pipe clamp D32	F0.000.0056.4	50
Pipe clamp D40	F0.000.0056.5	25
Pipe clamp D50	F0.000.0056.6	25

for adaptation to 05.569.7453.0 / 05.569.7553.0



Mounting bracket



Designation	Art. No.	PU
Mounting bracket	05.601.2519.0	10

Without distance to the ground.



Mounting bracket



Designation	Art. No.	PU
Mounting bracket with pipe holder	05.601.2419.0	10

Without distance to the ground, with holder for installation pipe Ø 20 mm.



PODIS® CON 5G16

ACCESSORIES AND TOOLS

Mounting sheet

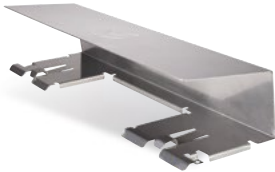


Designation	Art. No.	PU
Mounting sheet	05.560.4519.0	40

For installation of the connection module on the 50 x 100 mm or 25 x 100 mm mesh duct.



Cover



Designation	Art. No.	PU
Cover for connection modules	07.433.8753.0	1

Bit



Designation	Art. No.	PU
Bit TX 15 x 70	06.502.6410.0	1
Bit TX 15 x 50	06.502.6210.0	1

Cutting tool



Designation	Art. No.	PU
Cutting tool	F0.000.0051.9	1

Sample case podis® CON 5G16



Designation	Art. No.	PU
Sample case podis® CON 5G16	99.785.0000.0	1

Sample case podis® 5G16 EVC



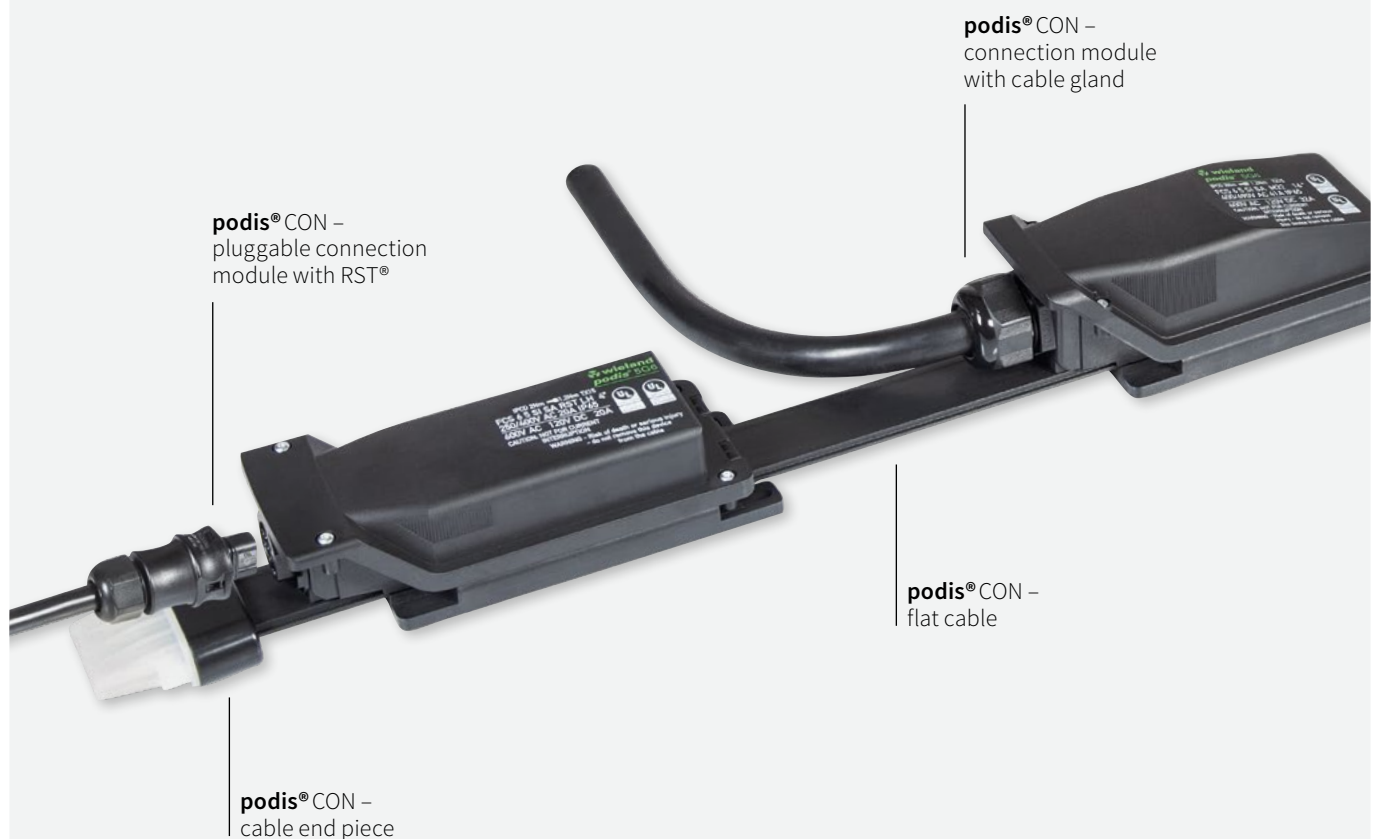
Designation	Art. No.	PU
Sample case podis® 5G16 EVC	99.789.0000.0	1

The sample case for electromobility.

PODIS® CON 5G6

Flat cable system

The podis® CON 5G6 flat cable system is similar to the 5G16 system. It also consists of only a few components. In addition to the standard connector modules, the system offers particularly low-profile connection modules for greater space savings.



FEATURES

- + 5-core flat cable system
- + 41 A / 690 V
- + UL 32 A / 600 V
- + For network applications
- + High and low versions

PODIS® CON 5G6 – COMPONENTS

Basic Portfolio



FLAT CABLE

The podis® CON 5G6 flat cable has a bending radius of just 30 mm and is equipped with 5 x 6 mm² conductors.

CONNECTION MODULE

The podis® CON 5G6 connection module for the flat cable is available in a standard version with a height of 74 mm and in a particularly low version with a height of 59 mm. This allows the system to be used even in the tightest installation spaces.



CABLE END CAP + FASTENING ELEMENTS

The cable end cap is mounted at the ends of the flat cable. This serves to maintain IP protection and to comply with clearance and creepage distances.

The fastening elements for the flat cable are usually placed at a distance of approximately 80 cm. They create a gap from the substrate and can be attached with screws or a setting tool.

PODIS® CON 5G6 – COMPONENTS

Components for further time savings + functions



PLUGGABLE CONNECTION MODULE

The pluggable connection module is equipped with an RST® device connector and is pre-wired internally. The mating component – the pre-assembled RST® cable – is then simply plugged in on site. This eliminates wiring effort and reduces the potential for errors to a minimum. This applies to both the standard and low-profile versions.

MAINTENANCE & MOTOR PROTECTION SWITCH MODULE

In addition to the connection to the flat cable, these extended connection modules offer integrated maintenance or motor protection switches in front of the outgoing cable.



CONNECTION MODULE WITH EXTENDED FUNCTIONS

The connection module with raised cover offers the possibility of a larger wiring space, the integration of REGs on 3 TE or the integration of a second outgoing unit.



PRE-ASSEMBLED CABLES RST®

The connection between the pluggable modules and the end user is realized with the pre-assembled cable. They are prepared for a conventional connection on the outgoing side and pre-assembled with the necessary socket on the incoming side, which is connected to the connection module or circuitbreaker module.

TECHNICAL DATA

- Rated voltage: 690 V
- Rated current: 41 A
- Rated cross-section: 6 mm²
- IP protection: 65

TECHNICAL DATA c US LISTED

- Rated voltage: 600 V
- Rated current: 32 A
- Design cross-section: AWG 10
- NEMA Type Rating: 1

PODIS® CON 5G6

FLAT CABLES AND CONNECTION MODULES

Flat cable



Designation	Type	Art. No.	PU
Flat cable	XPE 5G6	00.729.0305.1	500 m

TECHNICAL DATA

Nominal voltage U	750 V
Color outer sheath	Black
Material outer sheath	Copolymer (XPE)
Core identification	colored
Bending radius, static	30 mm
Flame retardant	Acc. EN 50265-2-1
Halogen free	according to EN 50267-2-2

UL (TC-ER)

Nominal voltage: 600 V AC
Conductor cross-section: AWG 6

cUL (AWM)

Nominal voltage: 600 V AC
Conductor cross-section: AWG 10

Connection module for cable gland



Designation	Type	Art. No.	Art. No.	PU
Connection module	FCS 6 5 SI SA M32	75.250.0053.1		2
Connection module	FCS 6 5 SI SA M25		75.256.0053.1	2

TECHNICAL DATA

Rated voltage	690 V	
Rated current	41 A	
Connection type	Screw connection	
Connection cross section stranded	1.5 - 16 mm²	
Output	M32	M25
Color	Black	
Degree of protection	IP65	
Length x Width x Height	218 x 84 x 74 mm	

cULus

Rated voltage: 120 V DC / 600 V AC
Rated current: 32 A
Connection cross section: AWG 10 str.



Cable glands not included in delivery, these can be ordered separately, see page 46.

Connection module LH for cable gland



Designation	Type	Art. No.	PU
Connection module	FCS 6 5 SI SA M25 LH	75.256.0153.1	2

TECHNICAL DATA

Rated voltage	690 V
Rated current	41 A
Connection type	Screw connection
Connection cross section stranded	1.5 - 16 mm ²
Output	M25
Degree of protection	IP65
Color	Black
Length x Width x Height	218 x 84 x 59 mm

cULus

Rated voltage: 120 V DC / 600 V AC
Rated current: 20 A
Connection cross section: AWG 14 str.



Cable glands not included in delivery, these can be ordered separately, see page 46.

PODIS® CON 5G6

CONNECTION MODULES

Pluggable connection module with RST®



Designation	Type	Art. No.	PU
Connection module	FCS 6 5 SI SA RST 20i5	75.252.0053.1	2

TECHNICAL DATA

Rated voltage	690 V
Rated current	20 A
Connection type	Pluggable
Internal wiring	2.5 mm ²
Degree of protection	IP65
Color	Black
Length x Width x Height	218 x 84 x 74 mm

cULus

Rated voltage:	120 V DC / 600 V AC
Rated current:	20 A
Connection cross section:	AWG 14

Pluggable connection module with RST®



Designation	Type	Art. No.	PU
Connection module	FCS 6 5 SI SA RST 20i5 LH	75.252.0153.1	2

TECHNICAL DATA

Rated voltage	690 V
Rated current	20 A
Connection type	Plug-in connection
Internal wiring	2.5 mm ²
Degree of protection	IP65
Color	Black
Length x Width x Height	218 x 84 x 59 mm

cULus

Rated voltage:	120 V DC / 600 V AC
Rated current:	20 A
Connection cross section:	AWG 14

PODIS® CON 5G6 CIRCUITBREAKER MODULES MCB



3-pole MCB B16 A

Pluggable with RST20i5 & M12-A signal

Integrated

- 3-pole LS B16 A
- Auxiliary switch

Order No. 75.252.1055.1 | PU 1

PODIS® CON 5G6 FURTHER MODULES



Maintenance switch module – 40 A / 400 V; AC-23A (Pe) 11 kW & auxiliary switch

For cable gland M25 & M12-A Signal

Integrated

- 3-pole maintenance switch 40 A
- Auxiliary contact 16 A
- Handle
- N terminal & SL terminal 6 mm²

Order No. 75.256.0255.1 | PU 1



Cable glands not included in delivery,
these can be ordered separately, see page 46.



Motor protection switch module – 3-pole 16 A & auxiliary switch

Pluggable with RST20i5 & M12-A signal

Integrated

- 3-pole MSS 16 A
- Auxiliary switch

Order No. 75.252.1155.1 | PU 1



Double output

For 2 x cable gland M32

Order No. 75.256.0353.1 | PU 1

TECHNICAL DATA	
Rated voltage	690 V
Rated current	41 A
Connection type	Screw connection
Connection cross section stranded	
- One conductor per terminal point	1.5 - 16 mm ²
- Two conductors per terminal point*	1.5 - 6 mm ²
Output	2 x M32
Degree of protection	IP65
Color	Black
Length x Width x Height	219 x 84 x 140 mm



Cable glands not included in
delivery, these can be ordered
separately, see page 46.



*Requires the use of a double wire end
ferrule. See accessories on page 46.

PODIS® CON 5G6 ACCESSORIES

Cable gland and lock nut



Designation	Type	Art. No.	PU
Cable gland	M25x1.5 for Ø 9-16 mm, black, UL approval	Z5.507.1453.1	10
Cable gland	M25x1.5 for Ø 13-18 mm, black, UL approval	Z5.507.1553.1	10
Locknut	M25x1.5, black	05.505.0253.1	10
Cable gland	M32x1.5 for Ø 10-21 mm, black, UL approval	Z5.507.1753.1	10
Cable gland	M32x1.5 for Ø 18-25 mm, black, UL approval	Z5.507.1653.1	10
Locknut	M32x1.5, black	05.505.0353.1	10
Multiple implementation	3x8 mm for M25, Z5.507.1553.1	05.512.4883.0	50
Multiple implementation	4x7 mm for M25, Z5.507.1553.1	05.512.5083.0	50
Multiple implementation	2x8 mm for M32, Z5.507.1653.1	05.512.4383.0	50

Cable patch



Designation	Type	Art. No.	PU
Cable patch	140x152 mm	Z6.563.7800.0	2

For sealing the contact points.

Cable end cap



Designation	Art. No.	PU
Cable end cap	Z6.563.6053.0	10

Twin ferrule



Designation	Type	Art. No.	PU
Twin ferrule	2x6 mm ²	06.600.7227.6	50

For double output module 75.256.0353.1.

PODIS® CON 5G6 ACCESSORIES

Cable clamp screw



Designation	Art. No.	PU
Cable clamp screw, with quick lock, black	05.569.7453.0	100

With distance to the ground, with clips for optional cable tray fastening.



Cable clip nail



Designation	Art. No.	PU
Cable clip nail, with quick lock	05.569.7553.0	100

With distance to the ground, for fastening with a nail gun.



Clip basket



Designation	Art. No.	PU
Clip basket	05.569.7753.0	20

In combination with 05.569.7453.0 / 05.569.7553.0.



Pipe clamp D20 - D50



Designation	Art. No.	PU
Pipe clamp D20	F0.000.0055.7	20
Pipe clamp D25	F0.000.0056.3	50
Pipe clamp D32	F0.000.0056.4	50
Pipe clamp D40	F0.000.0056.5	25
Pipe clamp D50	F0.000.0056.6	25

for adaptation to 05.569.7453.0 / 05.569.7553.0.



PODIS® CON 5G6

ACCESSORIES

Mounting sheet



Designation	Art. No.	PU
Mounting sheet	05.560.4519.0	40

For installation of the connection module on the 50 x 100 mm or 25 x 100 mm mesh duct.



Cover



Designation	Art. No.	PU
Cover for connection modules	07.433.8753.0	1

Piercing screws



Designation	Art. No.	PU
Piercing screws for connection module	05.055.0200.8	10

PODIS® CON 5G6

TOOLS AND SAMPLE CASES

Bit



Designation	Art. No.	PU
Bit TX 15x70	06.502.6410.0	1
Bit TX 15x50	06.502.6210.0	1

Cutting tool



Designation	Art. No.	PU
Cutting tool	F0.000.0051.9	1

Sample case podis® CON 5G6

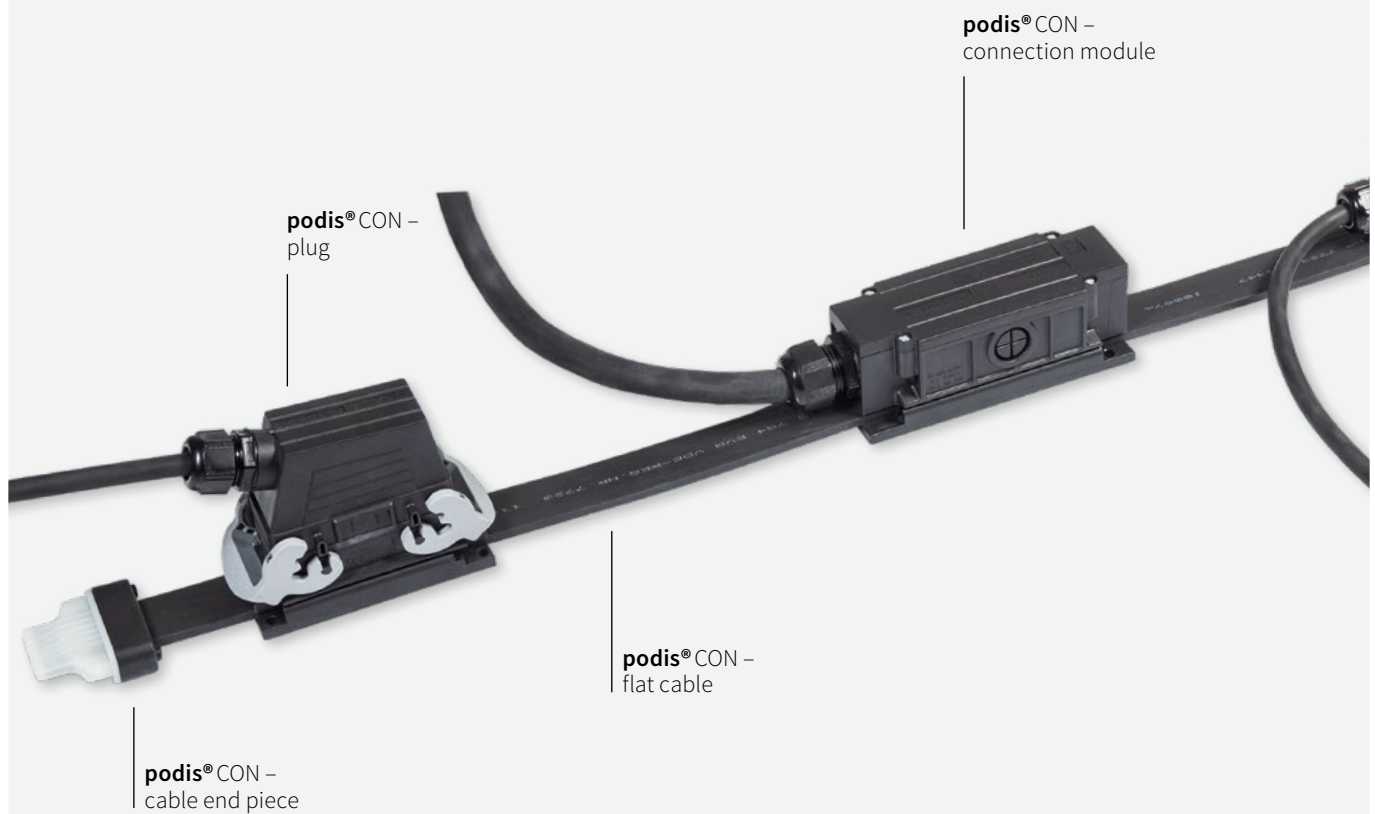


Designation	Art. No.	PU
Sample casepodis® CON 5G6	99.784.0000.0	1

PODIS® CON 7G4

Flat cable system

The podis® CON 7G4 flat cable system combines network application and communication. With its various components such as pluggable outlets or distribution modules, the system offers a wide range of applications.



FEATURES

- + 7-core flat cable system
- + 20 A / 500 V
- + UL 20 A / 600 V
- + For network applications + communication

PODIS® CON 7G4 – COMPONENTS

Portfolio



FLAT CABLE

The combined flat cable offers five wires for network applications and two additional wires for communication, e.g. via AS-I or DALI.

CONNECTION MODULE

The connection module with piercing contacts offers flexible outgoing options in four directions.



DISTRIBUTOR MODULE

The distributor modules have a round cable input and, thanks to pre-assembled double-deck terminals, offer the possibility of distributing to up to two flat cables.

PODIS® CON 7G4 – COMPONENTS

Portfolio



CABLE END CAP + FASTENING ELEMENTS

The cable end piece is mounted at the ends of the flat cable to maintain IP protection and air and creepage distances.

The 7G4 system uses quick-mounting plates for easy installation on and in the wire mesh duct. The connection modules can be mounted without screws, nuts, etc.

PLUG

The podis® CON 7G4 flat cable connectors enable pluggable connections for specific requirements with two variants: one with a cable gland and one with an M25 threaded connector. Both variants can be plugged into the flat cable outlet or the panel-mounted housing.



FLAT CABLE OUTLET

The flat cable outlet for podis® CON 7G4 is simply mounted on the flat cable and thus provides a pluggable connection to the flat cable to the consumer.



CABLE ASSEMBLIES

The pre-assembled cables for podis® CON 7G4 are available in various versions and lengths, either with a plug - free end, plug - connection module, connection module - connection module or connection module - free end, thus ensuring that the right solution for connecting to the flat cable is available at all times.

TECHNICAL DATA

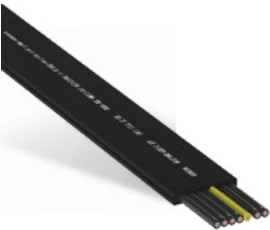
- Rated voltage: 500 V + 50 V DC
- Rated current: 20 A
- Rated cross-section: 4 mm²
- IP protection: 65

TECHNICAL DATA

- Rated voltage: 600 V
- Rated current: 20 A
- Design cross-section: AWG 12
- NEMA Type Rating: 1

PODIS® CON 7G4 FLAT CABLE

Flat cable



Designation	Type	Art. No.	PU
Flat cable	LI2X2X-FL 7G4 black	00.729.0504.1	1000 m

TECHNICAL DATA	
Nominal voltage U	600 V
Color outer sheath	Black
Material outer sheath	XLPE
Core identification	Numbers
Core insulation	XLPE
Bending radius, static	100 mm
Oil resistant (acc. EN 60811-2-1)	Yes
Halogen-free according to EN 50267-2-	Yes

UL (TC-ER)
Nominal voltage: 600 V
Conductor cross-section: AWG 12

cUL (AWM)
Nominal voltage: 600 V
Conductor cross-section: AWG 12

PODIS® CON 7G4 CONNECTION MODULES

Connecting module



Designation	Type	Art. No.	PU
Connecting module	FCS 4 7 SI FK	75.018.0051.2	6

TECHNICAL DATA

Rated voltage	500 V
Rated current	20 A
Connection type	Tension clamp connection
Connection cross section stranded	1.5 - 4 mm ²
Color	Black
Degree of protection	IP65
Length x Width x Height	160 x 60 x 60 mm

cULus (USA only)

Rated voltage:	600 V AC
Rated current:	20 A
Connection cross section:	AWG 12

cULus (Canada only)

Rated voltage:	600 V AC
Rated current:	15 A
Connection cross section:	AWG 12-14



Cable glands not included in delivery,
these can be ordered separately, see page 60.

Connecting module with quick mounting plate



Designation	Type	Art. No.	PU
Connecting module	FCS 4 7 SI FK FM	99.801.4866.1	4

TECHNICAL DATA

Rated voltage	500 V
Rated current	20 A
Connection type	Tension clamp connection
Connection cross section stranded	1.5 - 4 mm ²
Mounting method	Quick-assembly mesh duct
Color	Black
Degree of protection	IP65
Min. operating temperature	-30 °C
Max. operation temperature	55
Storage temperature / transport min.	-40 °C
Length x Width x Height	180 x 60 x 67 mm

cULus (USA only)

Rated voltage:	600 V AC
Rated current:	20 A
Connection cross section:	AWG 12

cULus (Canada only)

Rated voltage:	600 V AC
Rated current:	15 A
Connection cross section:	AWG 12 - 14



Cable glands not included in delivery,
these can be ordered separately, see page 60.

PODIS® CON 7G4

CONNECTION MODULES

Distributor module

1 input / 2 outputs



Designation	Type	Art. No.	PU
Distributor module	FH FC7	75.010.0555.1	2

TECHNICAL DATA

Rated voltage	500 V
Rated current	32 A
Input	M32 + optionally M20
Connection type	Screw connection
Connection cross section stranded	0.2 - 16 mm ²
Color	Black
Degree of protection	IP65
Length x Width x Height	225 x 100 x 104 mm



Cable glands not included in delivery, these can be ordered separately, see page 60.

Distributor module

1 input / 2 outputs



Designation	Type	Art. No.	PU
Distributor module	FCS 4 7 SA SA SW	75.010.0053.1	2

TECHNICAL DATA

Rated voltage	500 V
Input	M25 or M20
Connection type	Screw connection
Connection cross section stranded	1.5 - 4 mm ²
Color	Black
Degree of protection	IP65
Length x Width x Height	175 x 83 x 78 mm

cULus

Rated voltage:	600 V AC
Rated current USA:	30 A
Rated current CAN:	25 A
Connection cross section:	AWG 12 - 10 str.



Cable glands not included in delivery, these can be ordered separately, see page 60.

PODIS® CON 7G4 ACCESSORIES

Flat cable outlet



Designation	Type	Art. No.	PU
Flat cable outlet	FCS 4 7 SI BU SW	75.015.5153.1	5

TECHNICAL DATA

Rated voltage	500 V
Rated voltage auxiliary power	50 V
Rated current	20 A
Connection type	Penetration connection
Color	Black
Degree of protection	IP65
Length x Width x Height	120 x 60 x 55 mm

cULus

Rated voltage:	600 V AC
Rated current:	20 A
Connection cross section:	AWG 12

Plug complete



Designation	Type	Art. No.	PU
Plug complete	FCS 4 7 ST SA SO0	75.015.0151.0	5

TECHNICAL DATA

Rated voltage	500 V
Rated voltage auxiliary power	50 V
Rated current	20 A
Connection type	Screw connection
Connection cross section stranded	1.5 - 4 mm ²
Color	Black
Degree of protection	IP65
Length x Width x Height	94 x 57 x 79 mm

cULus

Rated voltage:	600 V AC
Rated current:	20 A
Connection cross section:	AWG 12

Plug



Designation	Type	Art. No.	PU
Plug	FCS 4 7 ST SA SO2	75.015.0151.2	5

TECHNICAL DATA

Rated voltage	500 V
Rated voltage auxiliary power	50 V
Rated current	20 A
Connection type	Screw connection
Connection cross section stranded	1.5 - 4 mm ²
Color	Black
Degree of protection	IP65
Length x Width x Height	94 x 57 x 79 mm

cULus

Rated voltage:	600 V AC
Rated current:	20 A
Connection cross section:	AWG 12

Cover



Designation	Type	Art. No.	PU
Lid without locking and sealing	BAS AD DA 16	07.409.7256.0	10

PODIS® CON 7G4

PRE-ASSEMBLED CONNECTING CABLES

Connection cable

Male - free end



Designation	Type	Art. No.	PU
Connection cable	FCS 2,5 7 STSA - 10	83.301.1020.1	10

TECHNICAL DATA

Rated voltage	400V
Rated current	20 A
Number of poles	7
Cable cross-section	2.5 mm²
Version cable end 1	male
Version cable end 2	Free end
Design of conductor ends	Ultrasonically compressed wire ends
Type of cable	Ölflex Classic 110
Cable diameter	11.1 mm
Sheath strip length	130 mm
Wire strip length	7 mm
Cable length	1.0 m

Variants	Type	Art. No.	PU
Cable length	2.0 m	FCS 2,5 7 STSA - 20	83.301.2020.1
	3.0 m	FCS 2,5 7 STSA - 30	83.301.3020.1
	5.0 m	FCS 2,5 7 STSA - 50	83.301.5020.1
	7.0 m	FCS 2,5 7 STSA - 70	83.301.7020.1

Connecting cable UL version

Male - free end



Designation	Type	Art. No.	PU
Connection cable	FCS AWG14 7 STSA - 20	83.301.2040.1	10

TECHNICAL DATA

Nominal voltage	600 V
Nominal current	16 A
Cable cross-section	AWG 14
Number of poles	7
Version cable end 1	male
Version cable end 2	Free end
Design of conductor ends	Ultrasonically compressed wire ends
Type of cable	Ölflex Control TM
Cable diameter	11.6 mm
Sheath strip length	130 mm
Wire strip length	7 mm
Cable length	2.0 m

Variants	Type	Art. No.	PU
Cable length	3.0 m	FCS AWG14 7 STSA - 30	83.301.3040.1

PODIS® CON 7G4

PRE-ASSEMBLED CONNECTING CABLES

Connecting cable

Plug - connection module



Designation	Type	Art. No.	PU
Connecting cable	FCS 2,5 7 STSA - SIFK10	83.302.1025.1	10

TECHNICAL DATA

Rated voltage	400V
Rated current	20 A
Number of poles	7
Cable cross-section	2.5 mm²
Version cable end 1	male
Version cable end 2	Connecting module
Design of conductor ends	-
Type of cable	Ölflex Classic 110
Cable diameter	11.1
Sheath strip length	-
Wire strip length	-
Cable length	1.0 m

Variants	Type	Art. No.	PU	
Cable length	2.0 m	FCS 2,5 7 STSA SIFK - 20	83.302.2025.1	5
	4.0 m	FCS 2,5 7 STSA SIFK - 40	83.302.4025.1	5

Connecting cable

Connection module - Connection module



Designation	Type	Art. No.	PU
Connecting cable	FCS 4 7 SIFK SIFK 10	83.303.1039.1	10

TECHNICAL DATA

Rated voltage (V)	500
Rated current (A)	20
Number of poles	7
Cable cross-section (mm²)	4
Version cable end 1	Connecting module
Version cable end 2	Connecting module
Design of conductor ends	-
Type of cable	Ölflex Classic 110
Cable diameter	13.4 mm
Sheath strip length	-
Wire strip length	-
Cable length	1.0 m

Variants	Type	Art. No.	PU	
Cable length	2.0 m	FCS 2,5 7 SIFK SIFK - 20	83.303.2039.1	4
	5.0 m	FCS 2,5 7 SIFK SIFK - 50	83.303.5039.1	3
	7.0 m	FCS 2,5 7 SIFK SIFK - 70	83.303.7039.1	2

PODIS® CON 7G4

ACCESSORIES AND TOOLS

Cable gland and locknut



Designation	Type	Art. No.	PU
Cable gland	M16x1.5 for Ø 4-8 mm, black, with UL approval	Z5.507.1153.1	10
Locknut	M16x1.5, black	05.505.0053.1	10
Cable gland	M20x1.5 for Ø 7-13 mm, black, with UL approval	Z5.507.1353.1	10
Cable gland	M20x1.5 with AS-i insert, black	Z5.505.0653.1	10
Locknut	M20x1.5, black	05.505.0153.1	10
Cable gland	M25x1.5 for Ø 9-16 mm, black, with UL approval	Z5.507.1453.1	10
Cable gland	M25x1.5 for Ø 13-18 mm, black, with UL approval	Z5.507.1553.1	10
Locknut	M25x1.5, black	05.505.0253.1	10

Cable end cap



Designation	Art. No.	PU
Cable end cap for flat cable, black / transparent	Z5.562.7553.1	10

Blind seal



Designation	Art. No.	PU
Blind seal for feedthrough	05.563.7983.0	5

Flat cable feedthrough



Designation	Art. No.	PU
Housing feedthrough for flat cable	Z5.563.6553.1	10

FL sleeve



Designation	Art. No.	PU
FL sleeve	Z1.005.6553.1	1
For sealing the contact points.		

Bit



Designation	Art. No.	PU
Bit DIN 3128 PH 1x 70	06.502.5200.0	10

Cutting tool



Designation	Art. No.	PU
Cutting tool	F0.000.0051.9	1

PODIS® CON 7G4 **MOUNTING PLATES**

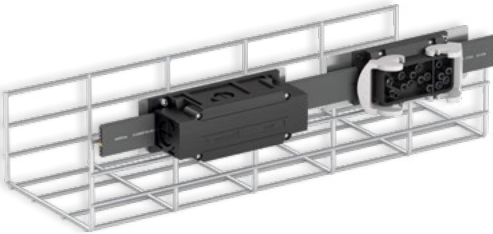
Mounting sheet
 outside the wire tray



Fig. similar

Designation	Art. No.	PU
Mounting sheet	05.560.3619.0	1

Valid for article no.: 75.015.5153.1, 75.018.0051.2.



Mounting sheet
 outside the wire tray



Designation	Art. No.	PU
Mounting sheet	05.560.4219.0	1

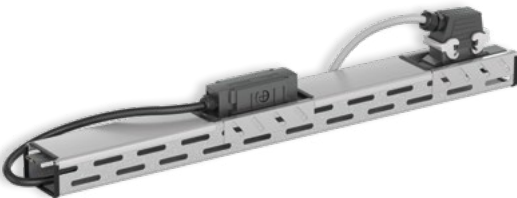
Valid for article no.: 75.015.5153.1, 75.018.0051.2.

Mounting sheet
 on the cable duct



Designation	Art. No.	PU
Mounting sheet	05.569.4210.0	10

Valid for article no.: 75.015.5153.1, 75.018.0051.2.



APPROVALS


Flat cable systems podis® CON 5G16, 5G6 & 7G4

CE & UKCA Declaration of Conformity based on the following standards:

- EN IEC 60670-1
- EN 60670-22
- EN 60998-1
- EN 60998-2-3
- EN 61439-2
- EN IEC 63000

Connection modules

USA / Canada


- Approval: cULus Listed 
- USA Standard: UL 2238, Cable Assemblies and Fittings for Industrial Control and Signal Distribution
- Canadian Standard: CSA C22.2 No. 182.3, Special Use Attachment Plugs, Receptacles and Connectors

Flat cables

USA


- Certification: UL Listing 
- Standard: UL 1277, Electrical Power and Control Tray Cables

Canada

- Certification: cUR Recognition 
- Standard: CSA C22.2 NO. 210:15 Appliance wiring material products

System approval connection modules & flat cable

USA

- Certification: UL Listed 
- Standard: UL 2875, Outline of Investigation for Modular Cable System Assemblies and Fittings for Industrial Control, Signal and Power Distribution





INFO TO GO

All brochures from Wieland Electric are available for download on our website.



<https://www.wieland-electric.com/en/support/downloads>

Interesting for you

BEHIND EV CHARGING

The system solution for an innovative charging infrastructure
Part No. 0438.1



PODIS® SMART CHARGING

Decentralized power bus system for supplying charging stations
Part No. 0840.1

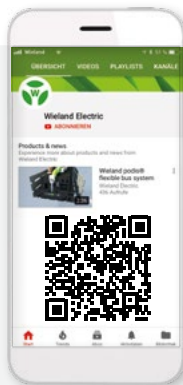


RST® CATALOG

Efficient installation - pluggable electrical installation systems in highest IP rating
Part No. 0690.1



Wieland on YouTube
See our solutions in motion



<https://www.youtube.com/user/WielandElectric>



Technical consultation
Building Solutions



Phone: +49 951 9324-991

E-mail: industry@wieland-electric.com

Worldwide: <https://wie.li/contactinternational>



ONLY ONE TAP AWAY

Our Wieland E-Shop

Over 25,000 products - anytime

In our online store you will find all the information about our products, prices, and technical data.

Order easily and conveniently online, and check availability.

<https://eshop.wieland-electric.com>



Scan QR code – view products in the E-SHOP.





wieland

HEADQUARTERS

Wieland Electric GmbH
Brennerstraße 10 – 14
96052 Bamberg · Germany

Phone +49 951 9324-0
Fax +49 951 9324-198
info@wieland-electric.com

0830.1 K 07/25

Represented in over 70 countries worldwide:

www.wieland-electric.com